



Attending Nursery at Howitt Primary Community School

Miss Gregg and Miss Holmes would like to welcome you to our Nursery at Howitt Primary Community School.

In our Nursery, we believe in giving all the children the best possible start to their school life. Essentially, this is done by providing a safe, happy and friendly environment for our children.

We know that children learn most effectively through play. Our dedicated staff create an environment in which purposeful play and learning can take place. Our role is to observe, interact, enable and extend the children's play in order that they gradually come to understand the world around them.

Morning Nursery: 8.30 – 11.30am
Afternoon Nursery: 12.30 – 3.30pm
From September 2017 if both parents or a single parent are working more than 16 hours you may be entitled to 30 hours of free childcare.

We can be flexible with your 15 hours but you will need to let staff and the office know which full days you would like your child to attend.

All day sessions are 8.30 am – 3.30 pm – parents/carers to provide a packed lunch.

Breakfast club is also available from 7.30 – 8.30 am, please ask for details
After school club is also available from 3.30-6pm, please ask for details.



What Is the EYFS?

The Early Years Foundation Stage covers the first stage of a child's care from birth to five years old. It sets the standards to ensure that all children learn and develop, as well as keeping them healthy and safe.

All schools and Ofsted registered early years providers in England must follow the EYFS.

- The EYFS is split into 7 Areas of Learning
- Communication and Language
- Personal, Social and Emotional Development
- Physical Development
- Literacy
- Mathematics
- Understanding the World
- Expressive Arts and Design

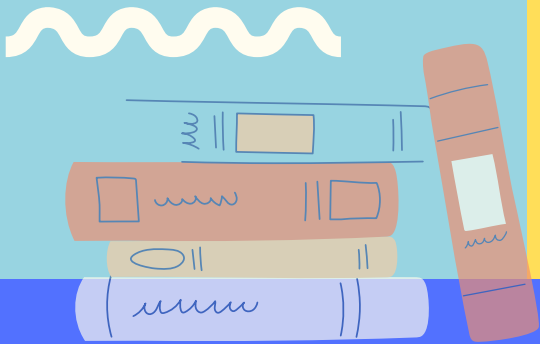
At the end of the EYFS, there are 17 Early Learning Goals that children are expected to achieve.



Miss Gregg
Nursery Teacher/
EYFS Lead



Miss Holmes
Nursery Teaching &
Learning Assistant



How can I help prepare my child for Nursery?

It is a big step to move to nursery and for some children it may be the first time they have spent time away from home. Here at Howitt Nursery we pride ourselves in building trusting relationships with you and your children.

The most simple, helpful experiences that you can provide are; providing simple and stable routines, asking your child to help with jobs around the home, experiencing the outdoors, like visiting your local park, encouraging your child to talk about their experiences and sharing a story or singing songs. All of these activities will assist your child's learning journey.

A few things that may help with the transition from home to nursery include:

- Being able to identify their own belongings e.g. their bag, coat, bottle.
- To be able to put a coat or shoes/boots.
- Being able to communicate their needs.
- Listen and join in with simple stories and rhymes

If your child is showing an interest in being toilet trained we will support this process with you. If they are not yet showing an interest the nursery has facilities for nappy changing.

It is an exciting step for your child to start nursery and we look forward to meeting you.

Parents/carers partnership

Our early year's team recognise parents'/carer's commitment to their children's early development and education and give priority to working as partners. The early year's team are available for parents/carers at the beginning and end of every session, parents/carers have access to their own Google Classrooms page where they can keep up to date with their child's learning and have communication with the class teacher. There are also opportunities to meet with the class teacher to discuss the children's learning journey and next steps as well as regular invitations for 'Stay and Play' sessions focusing on a specific area of learning within the EYFS.



Snack Time

All the children in nursery have access to snack and drinks. We encourage the children to be independent with their snack time and can choose when they have snack and how much they have. The snack time area is a place where they can refuel, socialise with friends and show their skills in managing their eating habits.

We provide healthy snacks including fruits, vegetables, cereals, bread sticks, cheese etc.

To keep up the variety of snacks we offer the children, we ask for a voluntary contribution of a £1 a week.

Thank you

Children can bring their own water bottle if they choose to, but we do provide drinks in the snack area



School Uniform

Nursery uniform is not compulsory but is recommended. It helps the children 'fit in' to the wider school community and saves your child's own clothes from Nursery wear and tear!

The children may also get dirty as they are playing and exploring in nursery – you may want to provide wellies, a puddle suit and an older coat.

Our school uniform is:
a blue polo shirt
grey/black skirt or trousers
navy cardigan or school sweatshirt

Please remember to label all items of clothing!

For more information about the nursery please visit our nursery website page <https://www.howittprimary.org.uk/nursery/>

Howitt Primary Community School

Holmes Street, Heanor,

Derbyshire.

DE75 7FS

Tel: 01773 713217

enquiries@howitt.derbyshire.sch.uk

